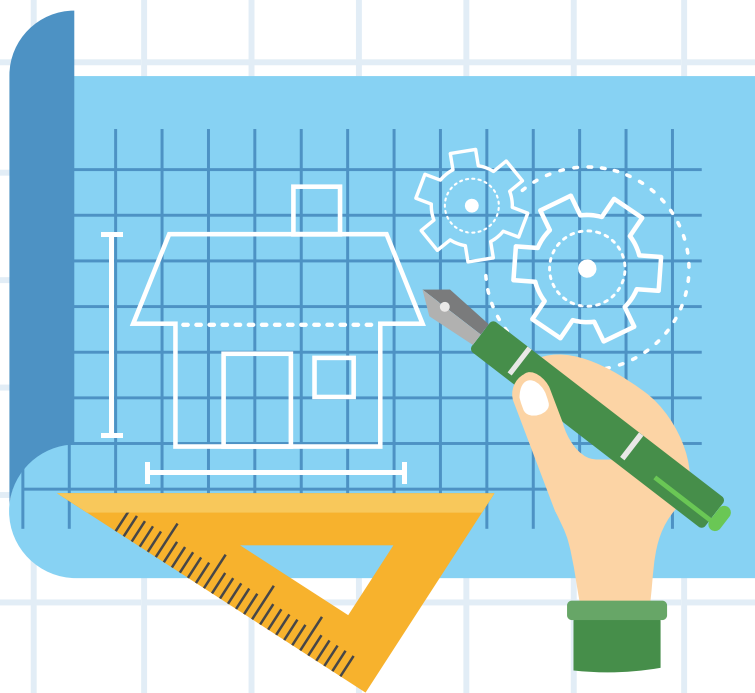


TEST BLUEPRINTS

What are test blueprints?

Test blueprints indicate the intentional selection of standards and priorities for an assessment based on the purpose of that assessment. They define content from academic standards that can be appropriately measured by the assessment and delineate appropriate proportions of the content for the assessment.

When constructing a building an engineer thinks carefully about what he wants the end product to look like and then creates a diagram - or blueprint - outlining each detail. This blueprint guides construction.



Similarly, test blueprints provide the plan for what a test will measure and guide all subsequent steps of test construction. GaDOE uses test blueprints to direct the construction of state summative assessments; likewise, teachers can use test blueprints to inform construction of classroom assessments.

What information is included on test blueprints?

Content standards are placed into reporting categories that define how achievement is reported. Each reporting category must be represented by at least 6 points on the test.

Reporting Categories

Blueprints show the content standards assessed. The proportion of content is reflected by the approximate number of points for each reporting category.

Proportion of Content

Blueprints identify the types of items used to assess the content standards and the number of points per item type.

Types of Items

Reporting Category/Domain	Content Standards Assessed	Approximate # of Points	Approximate % of Test
Reading and Vocabulary		32	53%
Key Ideas and Details	ELAGSE3.RL (1, 2, 3)	18	30%
	ELAGSE3.RI (1, 2, 3)		
Craft and Structure/Integration of Knowledge and Ideas	ELAGSE3.RL (5, 6, 7, 9)	8	13%
	ELAGSE3.RI (5, 6, 7, 8, 9)		
Vocabulary Acquisition and Use	ELAGSE3.RL4/RI4 (4, 4a, 4b, 4c, 4d, 5, 5a, 5b, 5c, 6)	6	10%
Writing and Language		28	47%
Writing	ELAGSE3.W (1, 1a, 1b, 1c, 1d, 2, 2a, 2b, 2c, 2d, 3, 3a, 3b, 3c, 3d, 4, 7, 8)	16	27%
Language	ELAGSE3.L (1, 1a, 1b, 1c, 1d, 1e, 1f, 1g, 1h, 1i, 2, 2a, 2b, 2c, 2d, 2e, 2f, 2g, 3, 3a)	12	20%
Total		60	100%

Item Type	# of Items	# of Points
1-point Selected-Response and Technology-Enhanced	37	37
2-point Technology-Enhanced	5	10
2-point Constructed-Response	1	2
4-point Extended Constructed-Response (Narrative Writing)	1	4
7-point Extended Writing-Response (Opinion or Informational/Explanatory)	1	7
Total	45	60

How can test blueprints be used in the classroom?

Create your own blueprint.

Use these guidelines to create blueprints for formative or summative assessments in your classroom. Think about the standards you want to measure, the proportion of each standard, and assessment length.

Identify high-priority standards.

Use the blueprints to identify key standards needed for future success. A balanced system of assessment will assist in measuring students' progress towards mastery of standards throughout the year.

Assess in the Classroom.

Standards assessed only in the classroom are often essential pieces of learning that require higher levels of cognitive complexity not effectively measured with time constraints or limited resources. These standards should be measured and tracked at the classroom level to ensure mastery.